



GMT MONTHLY MEMBERSHIP PROGRESS REPORT

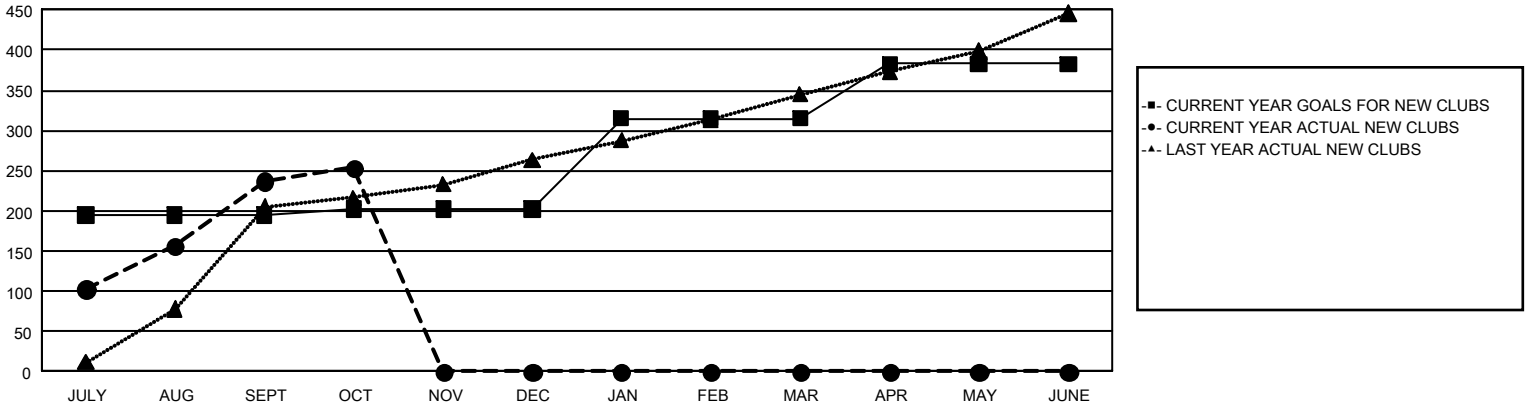
GAT Constitutional Area 6 - South Asia and Middle East

Results as of: 10/31/2024

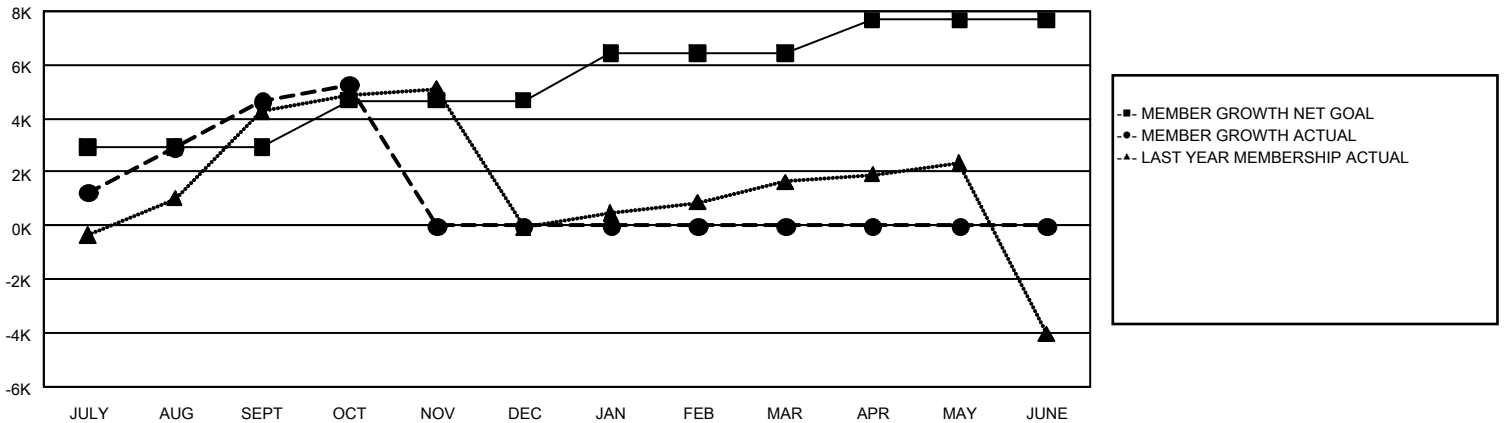
REPORT DOES NOT INCLUDE CLUBS IN UNDISTRICTED AREAS.

| Clubs | | | | Members | | | |
|-----------------------|---------------|-----------|---------------|-----------------------|------------------------|----------------------|--|
| RESULTS FOR 2024-2025 | | | | RESULTS FOR 2024-2025 | | | |
| QUARTER | NEW CLUB GOAL | NEW CLUBS | DROPPED CLUBS | QUARTER | MEMBER GROWTH NET GOAL | MEMBER GROWTH ACTUAL | DROPPED MEMBERS ACTUAL (including transfers) |
| JULY/AUG/SEPT | 195 | 237 | 57 | JULY/AUG/SEPT | 2,933 | 9,801 | 3,934 |
| OCT/NOV/DEC | 7 | 17 | 4 | OCT/NOV/DEC | 1,737 | 1,308 | 501 |
| JAN/FEB/MAR | 113 | 0 | 0 | JAN/FEB/MAR | 1,772 | 0 | 0 |
| APR/MAY/JUNE | 68 | 0 | 0 | APR/MAY/JUNE | 1,228 | 0 | 0 |

GOALS AND ACTUAL NEW CLUBS CUMULATIVE



GOALS AND ACTUAL MEMBERS CUMULATIVE



| | | |
|------------------------|---|-----------------------------------|
| DROPPED CLUBS: 61 | 1,424 CLUBS OF 4,075 ADDED 1 OR MORE NEW MEMBERS | GENDER DISTRIBUTION |
| | | MALE 68,220 (71.71%) |
| | | FEMALE 26,874 (28.25%) |
| DROPPED MEMBERS | CLICK HERE FOR CUMULATIVE MEMBERSHIP DATA | TOTAL FAMILY UNIT MEMBERS 0 |
| DECEASED 37 | | FAMILY MEMBERS PAYING HALF DUES 0 |
| CLUB CANCELLED 826 | | |
| OTHER 3,537 | | |
| TOTAL 4,400 | | |